



**HELLO  
SEATS!**

*materialised*

# SUSTAINABLE **FAUX LEATHERS**

*Innovative and sustainable faux leather upholstery.*

*For commercial trade & professional  
interior design markets.*

*“innovative & sustainable with over 18 designs”*

# CLEAN VINYL

With the introduction of Clean Vinyl from Momentum Textiles, Materialised continues to introduce innovative, sustainable and healthy products with this comprehensive range of faux leathers.

The Clean Vinyl upholstery collection was designed to provide a thorough and thoughtful offering of basic textures and colours which work well in a wide range of markets.

## COMPOSITION

- 100% CLEAN VINYL

## SUSTAINABILITY

- GREENGUARD CERTIFIED
- PHTHALATE FREE
- PVC FREE
- PROPOSITION 65 COMPLIANT
- CA SECTION 01350
- HPD'S
- CHIME, ANTHOLOGY, SANYA AND FRIDA ARE NSF 336 COMPLIANT

## PERFORMANCE

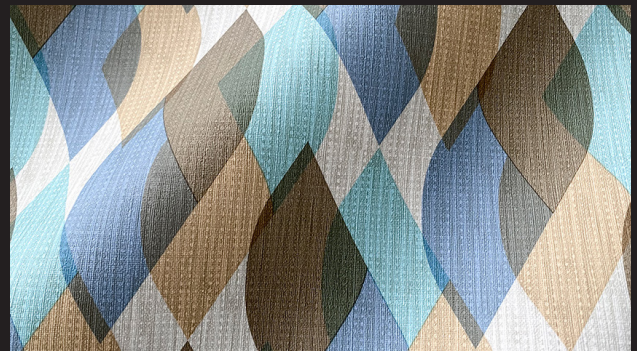
- BLEACH CLEANABLE (1:10)
- FR: CA BULLETIN 117 2013
- RUB RATES VARY FROM 100,000 TO 1,000,000 (WYZENBEEK) DEPENDING ON THE DESIGN.



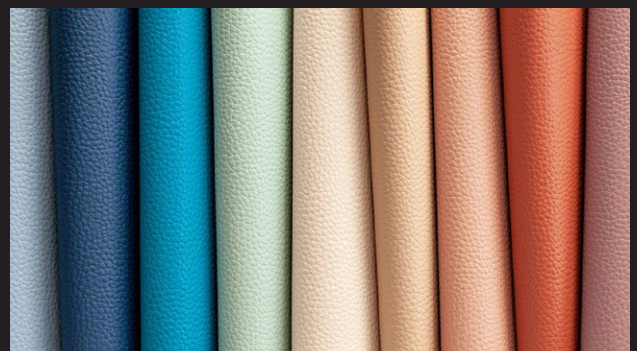
SPEAKEASY CV



EVO CV



CHIME CV

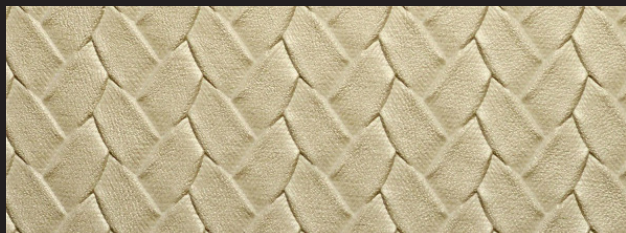


HYDE CV

*“lovely textures and woven metallics”*

# PHTHALATE FREE PVC'S

Materialised is home to some phthalate-free PVC's that offer lovely textures and woven metallics.



INTERLACE



IMPRESSION

## **INTERLACE AND IMPRESSION**

### **COMPOSITION**

- 100% PVC FACE

### **SUSTAINABILITY**

- PHTHALATE FREE
- LEAD FREE
- BPA/TRIS FORMALDEHYDE FREE
- CONTAINS NO CONFLICT MINERALS

### **PERFORMANCE**

- BLEACH CLEANABLE (1:10)
- FR: AS/NZS 1530 PT 3
- IMPRESSION: 250,000 DOUBLE RUBS WYZENBEEK
- INTERLACE: 100,000 DOUBLE RUBS WYZENBEEK

*“inherently antimicrobial with superior cleanability”*

# SILICONES

Silicone is made from sand naturally occurring in the environment, with sustainability and performance attributes important to the contract textile industry.

## SILICA

### COMPOSITION

- 100% SILICONE

### SUSTAINABILITY

- GREENGUARD GOLD CERTIFIED
- PVC FREE
- ZERO SOLVENTS

### PERFORMANCE

- INHERENTLY ANTIMICROBIAL
- INK ERASABLE WITH WATER
- BLEACH CLEANABLE (1:4)
- FR: AS/NZS 1530 PT 3
- LIGHTFASTNESS 200 HRS CLASS 4.5
- 65,000 DOUBLE RUBS WYZENBEEK



SILICA

## HAYDEN, SANTA FE & SILEX

### COMPOSITION

- 100% SILICONE

### SUSTAINABILITY

- CA SECTION 01350
- PHTHALATE FREE
- PVC FREE
- ZERO SOLVENTS
- HPD'S

### PERFORMANCE

- INHERENTLY ANTIMICROBIAL
- BLEACH CLEANABLE (1:10)
- FR: AS/NZS 1530 PT 3, IMO A.652(16) 8.2 & 8.3
- IMO CERTIFIED
- LIGHTFASTNESS 1500 HRS INDOOR
- 200,000 DOUBLE RUBS WYZENBEEK



HAYDEN, SANTA FE & SILEX

*“exceptional hand & notable performance”*

# SILICONE HYBRIDS

Now Momentum has developed hybrids incorporating the best of both silicone and polyurethane.

Introducing Silica Blend and Silica Suede, the latest innovative additions to the Silica family of coated products.

Offering an exceptional hand, notable performance, and more choice; these designs combine high-performance polyurethane with the aesthetic, sustainability and cleanability of Silica.

## COMPOSITION

- 70% PVC-FREE POLYURETHANE; 30% SILICONE FACE

## SUSTAINABILITY

- GREENGUARD CERTIFIED
- PVC FREE

## PERFORMANCE

- INHERENTLY ANTIMICROBIAL
- BLEACH CLEANABLE (1:4)
- FR: CA BULLETIN 117 2013
- LIGHTFASTNESS 200 HRS CLASS 5
- 500,000 DOUBLE RUBS WYZENBEEK



SILICA SUEDE



SILICA BLEND



SILICA BLEND & SUEDE



SILICA SUEDE

*“superior molecular structure”*

# EPU'S

EPU polyurethane is created utilising a new superior molecular structure that yields reduced environmental impact and increased performance.

## COMPOSITION

- 100% EPU POLYURETHANE

## SUSTAINABILITY

- GREENGUARD CERTIFIED
- PVC FREE
- ZERO WATER; ZERO WASTE CHEMICALS; ZERO SOLVENTS IN PRODUCTION
- BLEACH CLEANABLE (1:4)

## ENDURANCE EPU

### PERFORMANCE

- SUPERIOR HYDROLYSIS RESISTANCE AT 15 WEEKS
- FR: AS/NZS 1530 PT 3, IMO 2010 FTP CODE ANNEX 1 PT 8 (SMOULDERING CIGARETTE TEST)
- IMO CERTIFIED
- LIGHTFASTNESS 200 HRS CLASS 4
- 1,000,000 DOUBLE RUBS WYZENBEEK

## DEXTER EPU

### PERFORMANCE

- FR: CA BULLETIN 117 2013
- LIGHTFASTNESS 200 HRS CLASS 4.5
- 285,000 DOUBLE RUBS WYZENBEEK

## PRINTWORK EPU

### PERFORMANCE

- NSF 336 COMPLIANT
- FR: CA BULLETIN 117 2013
- LIGHTFASTNESS 200 HRS CLASS 4.5
- 500,000 DOUBLE RUBS WYZENBEEK



PRINTWORK EPU

ENDURANCE EPU



DEXTER EPU

*“what does that mean?”*

# GLOSSARY

## **CA SECTION 01350**

California 01350 is a Special Environmental Requirements standard specification developed by the State of California to cover key environmental performance issues related to the selection and handling of building materials.

## **GREENGUARD CERTIFIED**

GREENGUARD Certification ensures that a product has met some of the world’s most rigorous and comprehensive standards for low emissions of volatile organic compounds (VOCs) into indoor air. Indoor air quality (IAQ) is closely tied to health, and is therefore recognised as an important concern in homes, schools, healthcare environments and commercial spaces. Volatile organic compound (VOC) emissions from building materials and furnishings is a major source of indoor air pollution. GREENGUARD Certification has been widely adopted as a trusted standard for low-emitting products.

## **GREENGUARD GOLD CERTIFIED**

The GREENGUARD Gold standard includes health-based criteria for additional chemicals and also requires lower total VOC emissions levels to ensure that products are acceptable for use in environments such as schools and

healthcare facilities. In addition to limiting emissions of more than 360 VOCs and total chemical emissions.

## **HPDS**

Health Product Declarations (HPDs) provide a full disclosure of the potential chemicals of concern in products. The Health Product Declaration (HPD) provides a standardised way of reporting the material contents of building products, and the health effects associated with these materials.

## **PHTHALATES**

A family of industrial chemicals used to soften polyvinyl chloride (PVC) plastic and other consumer products. Studies have shown that phthalates can be damaging to human health.

## **PROPOSITION 65**

Became law in 1986, Proposition 65 requires businesses to provide warnings to Californians about significant exposures to chemicals that cause cancer, birth defects or other reproductive harm. These chemicals can be in the products that Californians purchase, in their homes or workplaces, or that are released into the environment.



HYDE CV

*materialised*

+61 2 8558 3500 | [materialised.com](http://materialised.com)

**VISIT OUR WEBSITE TO VIEW THE ENTIRE RANGE, GET TECHNICAL INFORMATION, ORDER SAMPLES AND BOOK DESIGN STUDIO APPOINTMENTS.**

Read more on our sustainability statement and practices. [Materialised.com.au/sustainability](http://Materialised.com.au/sustainability)